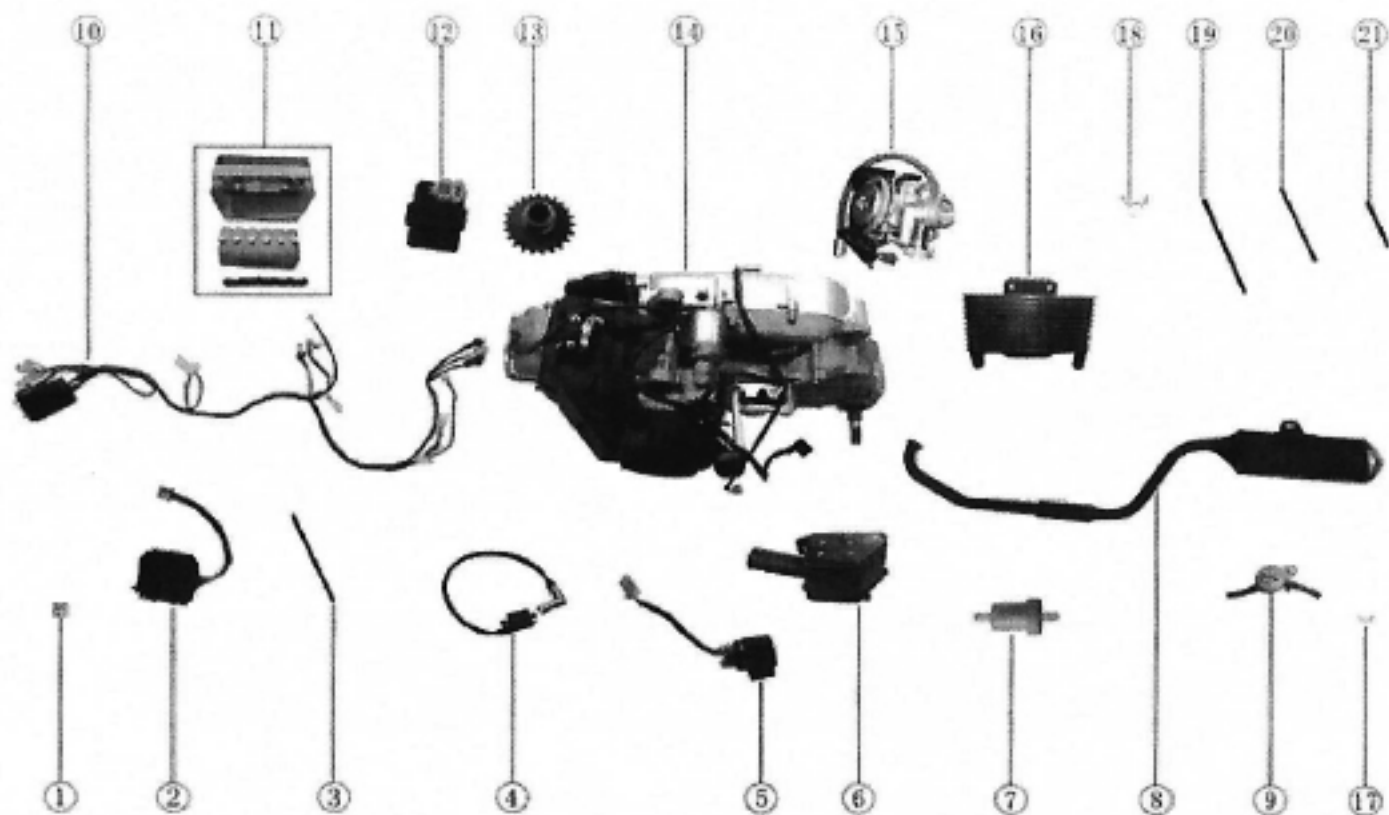


FRAME ASSEMBLY

零部件目录 PART CATELAG

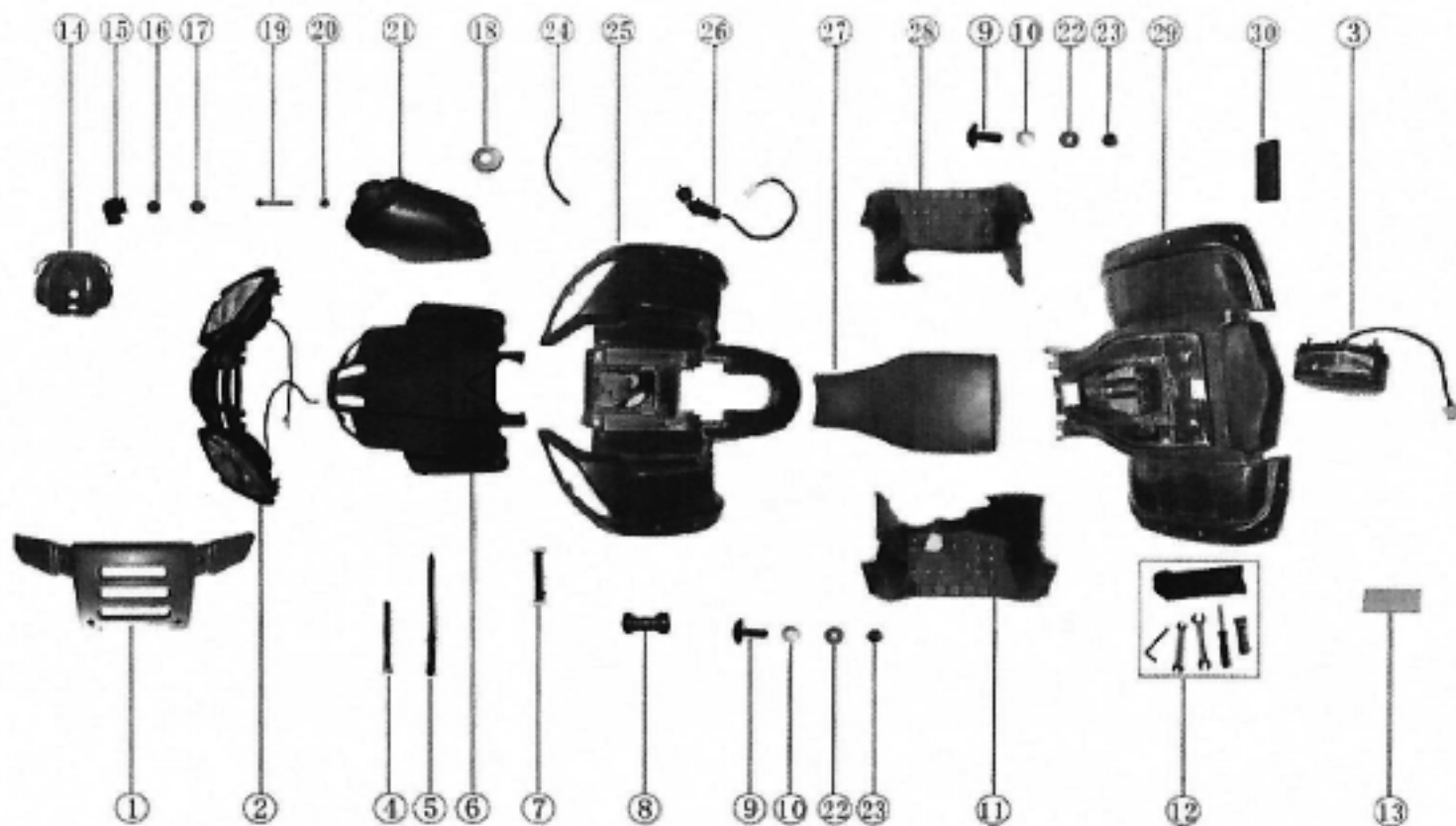
序号 S/N	零部件代号 Part No.	Description	零部件名称 Part name	数量 Quantity
1	0906161-0009	LOCK NUT M8	六角法兰面螺母M8	2
2	0512100-0265	BUMPER	保险杠	1
3	0906104-0016	HEXANGULAR BOLT M8×20	六角头带盘螺栓M8×20	8
4	0151800-0002	OIL-COOLED COMPONENT SUPPORT	油冷器支架	1



ENGINE ASSEMBLY

零部件目录 PART CATELAG

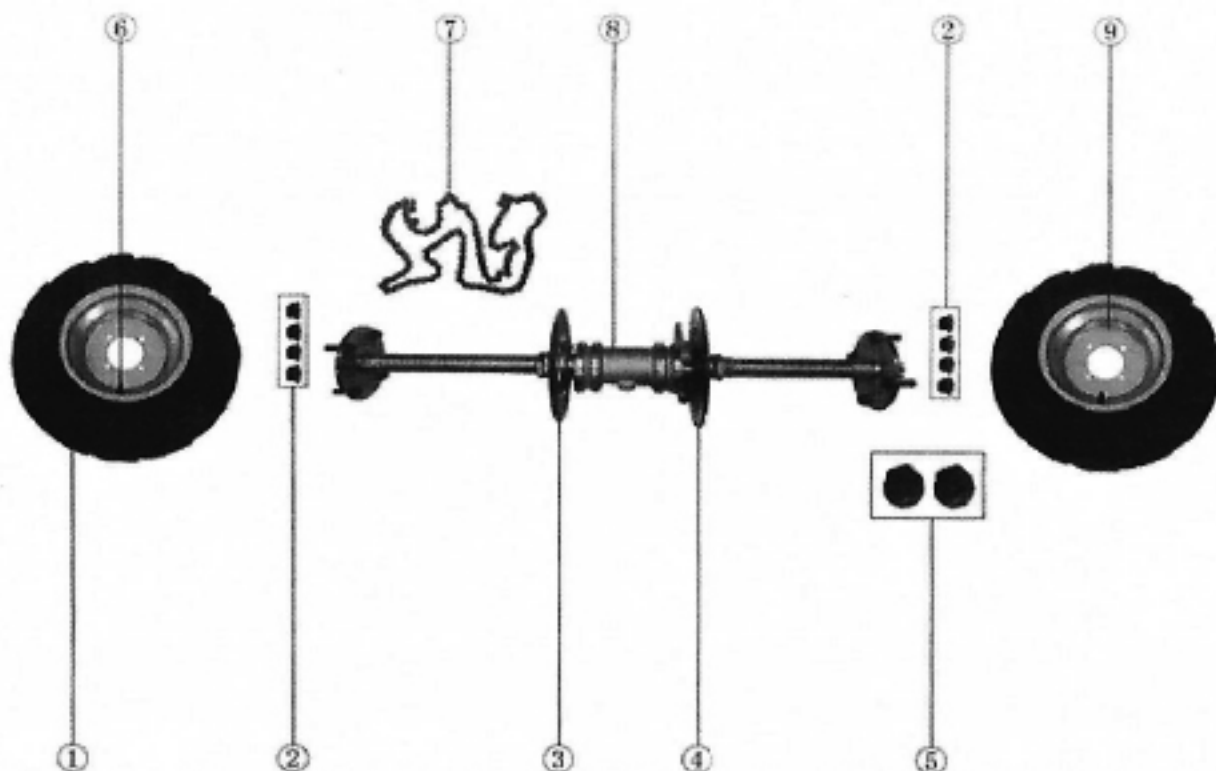
序号 S/N	零部件代号 Part No.	Description	零部件名称 Part name	数量 Quantity
1	0906104-0006	HEXANGULAR BOLT M6×16	六角头带盘螺栓M6×16	2
2	0302000-0002	REGULATOR	调压整流器	1
3	0802002-0001	WATER TUBE φ4×φ8×90mm	油管	1
4	0304000-0014	IGNITION COIL	点火线圈	1



COVERING PARTS ASSEMBLY

零部件目录 PART CATELAG

序号 S/N	零部件代号 Part No.	Description	零部件名称 Part name	数量 Quantity
1	0512200-0011	UP PROTECT PEDAL,FRONT BUMPER	前保险杠护板	1
2	0331000-0045	HEAD LIGHT ASSY	前照灯总成	1
3	0332000-0003	REAR LAMP ASSY	尾灯总成	1
4	0904101-0005	BAND 220*7mm	扎带 220*7mm	10
5	0904101-0003	BAND 130*10mm	扎带 130*10mm	4

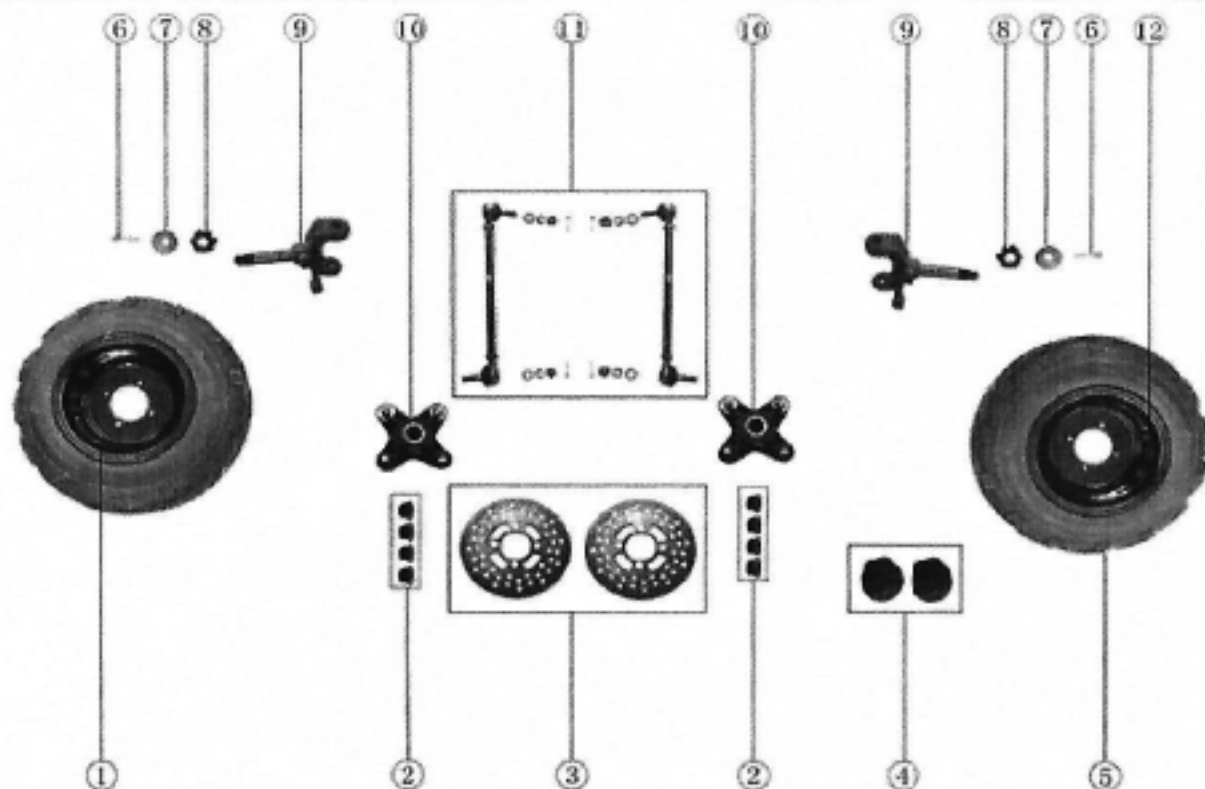


REAR WHEEL ASSEMBLY

零部件目录 PART CATELAG

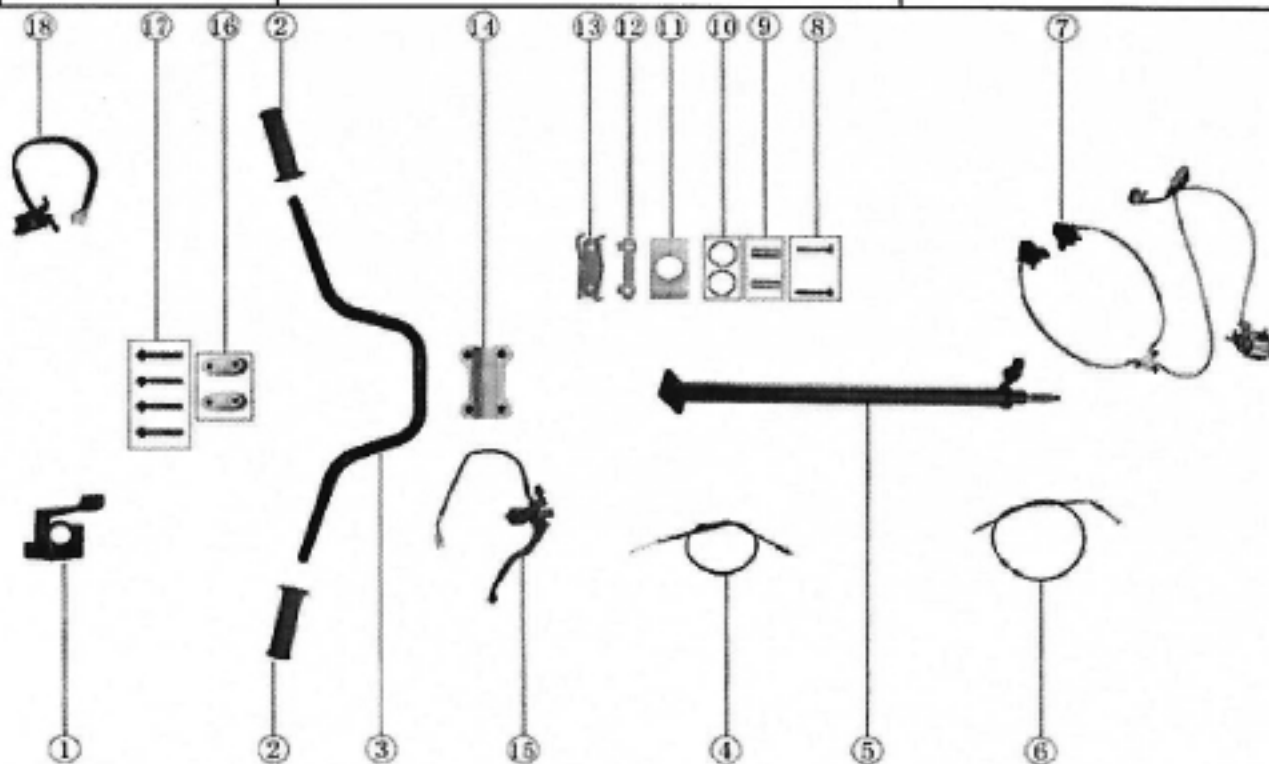
序号 S/N	零部件代号 Part No.	Description	零部件名称 Part name	数量 Quantity
1	0408000-0051	REAR TYRE	后轮胎	2
2	0906213-0001	NUT M10	锥度螺母 M10	8
3	0442001-0024	REAR BRAKE DISC	后碟刹盘	1
4	0405100-0051	SPROCKET WHEEL	链轮	1
5	0904206-0002	DUSTPROOF RUBBER BOOT	防尘护套	2
6	0400300-0001	INFLATING VALVE	气门嘴	2

7	0231000-0025	CHAIN	链条	1
8	0243000-0468	REAR BRIDGE ASSY	后桥总成	1
9	0405000-0001	REAR TYRE HUB	后轮毂	2

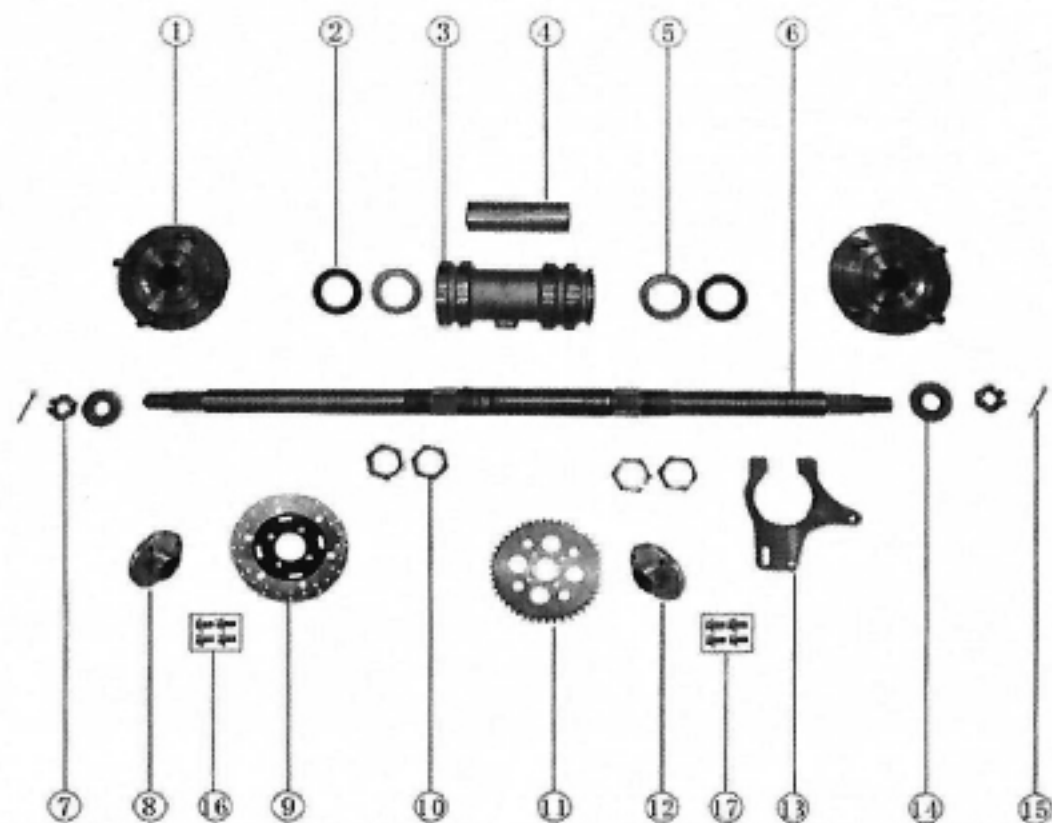


FRONT WHEEL ASSEMBLY				
零部件目录 PART CATELAG				
序号 S/N	零部件代号 Part No.	Description	零部件名称 Part name	数量 Quantity
1	0401000-0023	FRONT TYRE HUB	前轮毂	2
2	0906213-0001	NUT M10	锥度螺母 M10	8
3	0441001-0016	FRONT BRAKE DISC	前碟刹盘	2

4	0904206-0002	DUSTPROOF RUBBER BOOT	防尘护套	2
5	0404000-0057	FRONT TYRE	前轮胎	2
6	0906171-0006	PIN CUTTER	开口销	2
7	0906215-0003	WASHER	非标垫圈 $\phi 16.5 \times \phi 50 \times 3$	2
8	0906108-0001	CONE SLOT OF OPEN NUT MODEL	1型六角开槽螺母	2
9	0505000-0106	KNUCKLE ASSY	转向节部件	1
10	0441600-0221	FRONT DISC SEAT	前碟刹基座	2
11	0430500-0019	TIE ROD ASSY	转向拉杆组件	1
12	0400300-0001	INFLATING VALVE	气门嘴	2



REAR WHEEL ASSEMBLY



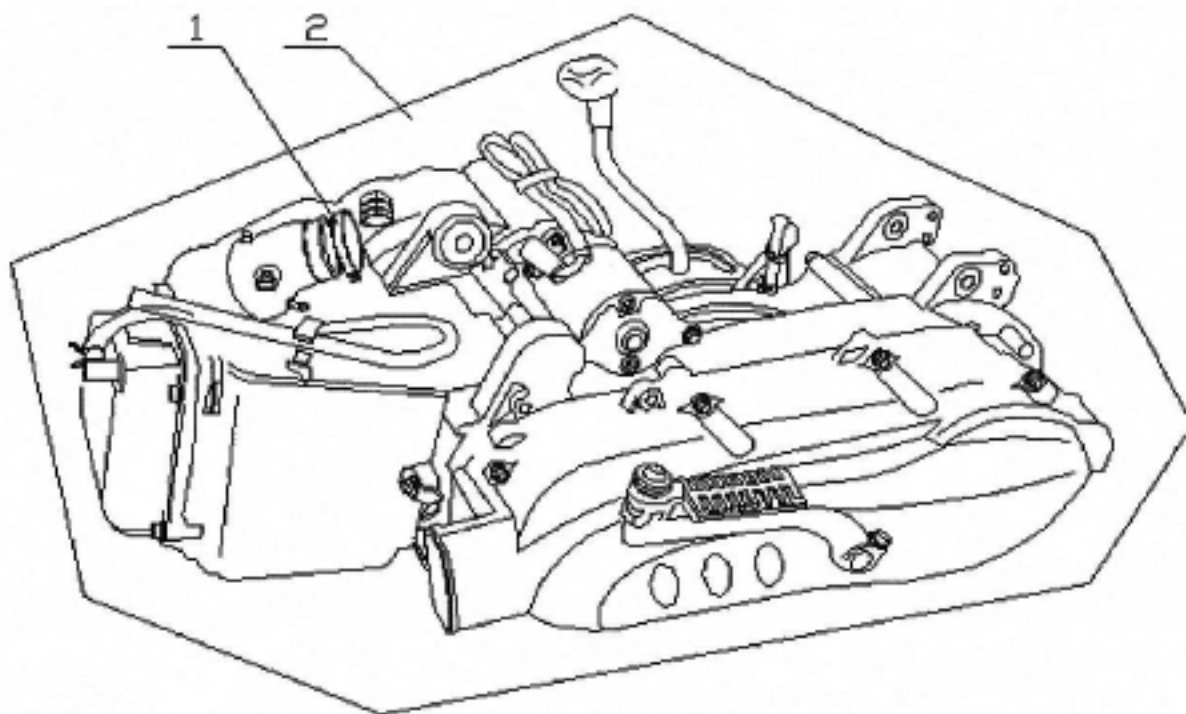
REAR WHEEL ASSEMBLY

零部件目录 PART CATELAG

序号 S/N	零部件代号 Part No.	Description	零部件名称 Part name	数量 Quantity
1		CONNECTOR PLATE	后轮连接盘	2
2	0240001-0001	OIL SEAL,REAR BRIDGE	后桥油封	2
3		BEARING SEAT	轴承座	1
4		BUSH SHAFT	轴套	1
5	0243011-0001	BEARING,REAR AXLE	后桥轴承	2

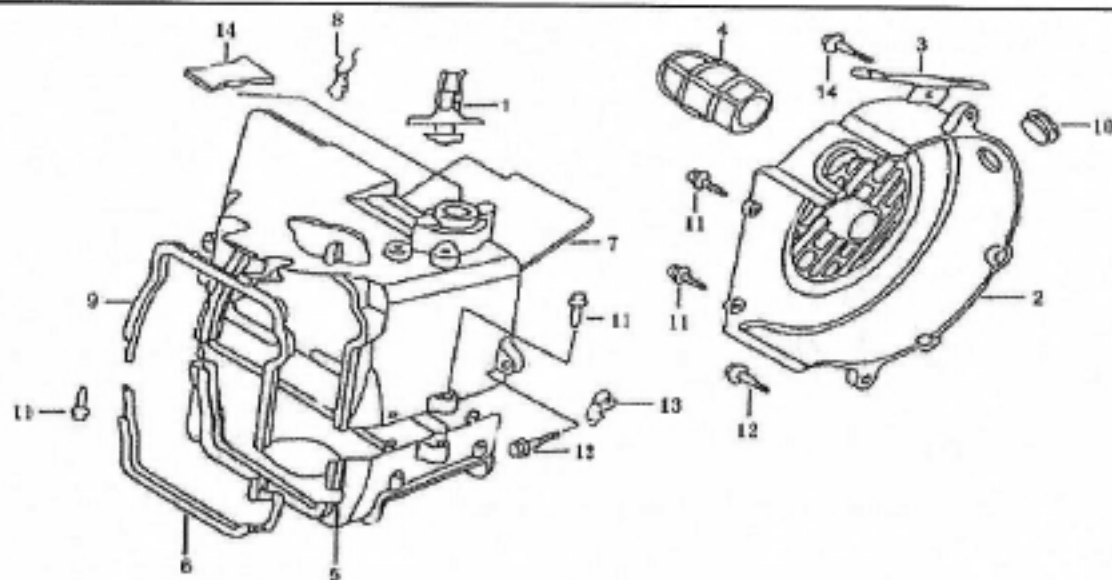
F

JL1P63QML沙滩车发动机图解目录



发动机 Engine

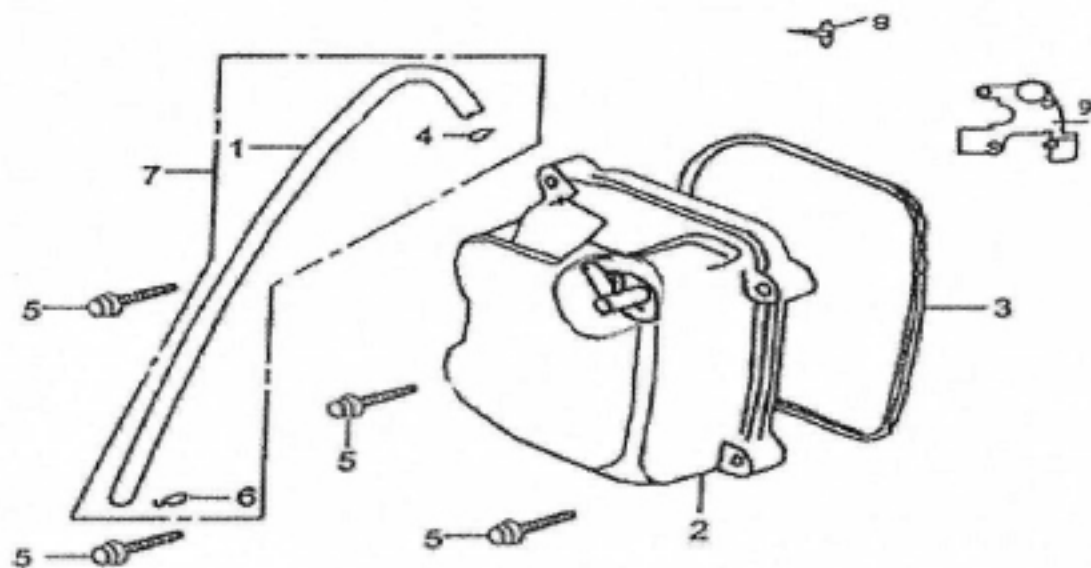
序号 No	件号 Part No	中文名称 Chinese	英文名称 Description	数量 Q'ty	备注 Remark
1		化油器卡箍	CARBURETOR CLAMP	1	
2	0110000-0496	发动机总成	ENGINE ASSY	1	



风扇盖引擎罩盖 Fan Cover Shroud

序号 No	件号 Part No	中文名称 Chinese	英文名称 Description	数量 Q'ty	备注 Remark
1	0101418-0001	通气管夹	CLAMPER BREA THER TUBE	1	汽缸通气管夹
2		冷却风扇盖	COVER CLMPPAN	1	
3	0101421-0001	起动机导线夹	CLAMPER STARTER CABLE	1	
4	0101422-0001	化油器冷却导管	DUC CARBURETOR COOLING	1	
5		罩盖A	SHROUDA	1	
6	0101425-0001	罩盖A油封	SEAL SHROUD A	1	
7		罩盖B	SHROUD COMP B	1	
8	0101405-0009	高压线夹	CLIP HIGH TENSION CORD	1	
9	0101427-0001	罩盖B油封	SEAL SHROUD B	1	
10	0101428-0001	橡皮塞	CROMMET SIDE PANEL	1	

11	0906176-0031	螺钉ST5×16	SCREW TAPPING ST5×16	4	
12	0906104-0111	螺栓M6×25	BOLTED FLANGE M6×25	3	
13	0101114-0005	溢油管夹	CLAMPER CABB DRAIN TUBE	1	溢流管夹
14	0101429-0001	橡皮塞 (B)	CROMMET SHROUD (B)	1	

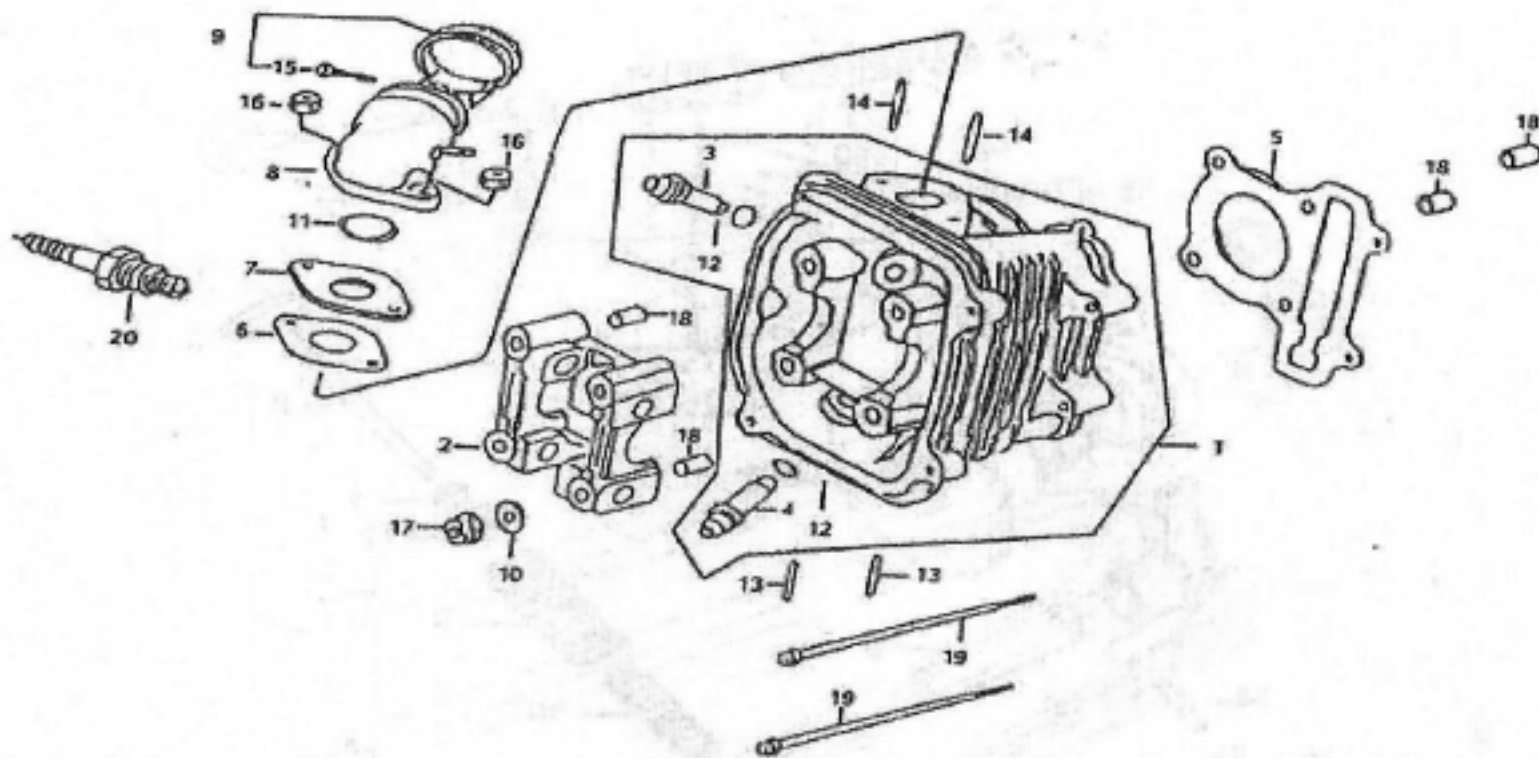


气缸头盖 Cylinder Head Cover

序号	件号	中文名称	英文名称	数量	备注
No	Part No	Chinese	Description	Q'ty	Remark
1	0101202-0007	通气管	TUBE BREA TEHER	1	
2		气缸头盖 102271-035 ?	COVER COMP CYLINDER HEAD	1	
3	0102275-0007	气缸头盖垫圈	CASKET HEAD COVER	1	
4	0101203-0006	通气管夹 (D8.5)	CLAMP TUBE (D8.5)	1	
5	0906104-0112	螺栓 M6×25	BOLTED FLANGE M6×25	4	
6	0101203-0007	通气管夹 (D12)	CLAMP TUBE (D12)	1	

AC

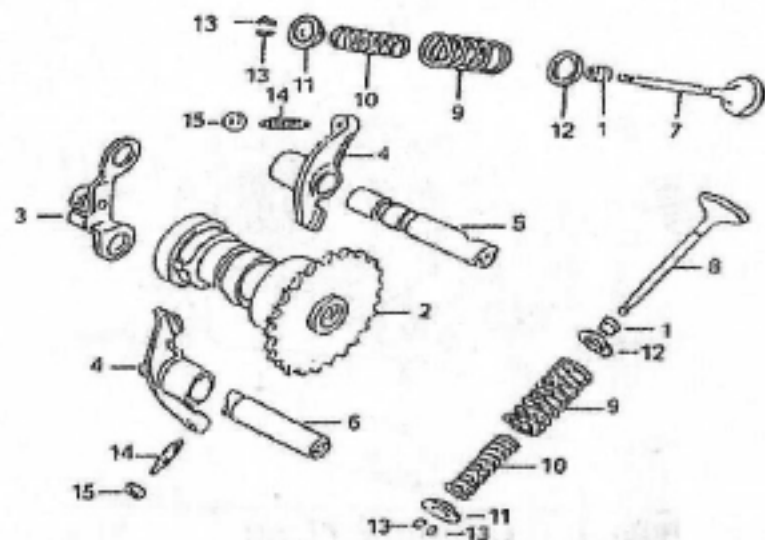
7	0101202-0009	通气管组件	TUBE ASSY BREATHER	1	
8	0906176-0029	螺钉ST4×8	SCREW TAPPING ST4×8	3	
9		通气压板 102227-002 ?	PLATE COVER	1	



气缸头 Cylinder Head

序号 No	件号 Part No	中文名称 Chinese	英文名称 Description	数量 Q'ty	备注 Remark
1		气缸头 102200-289 ?	HEAD COMP CYLINDER	1	
2		凸轮轴固定座 102223-001	HOLDER CAMSHAFT	1	

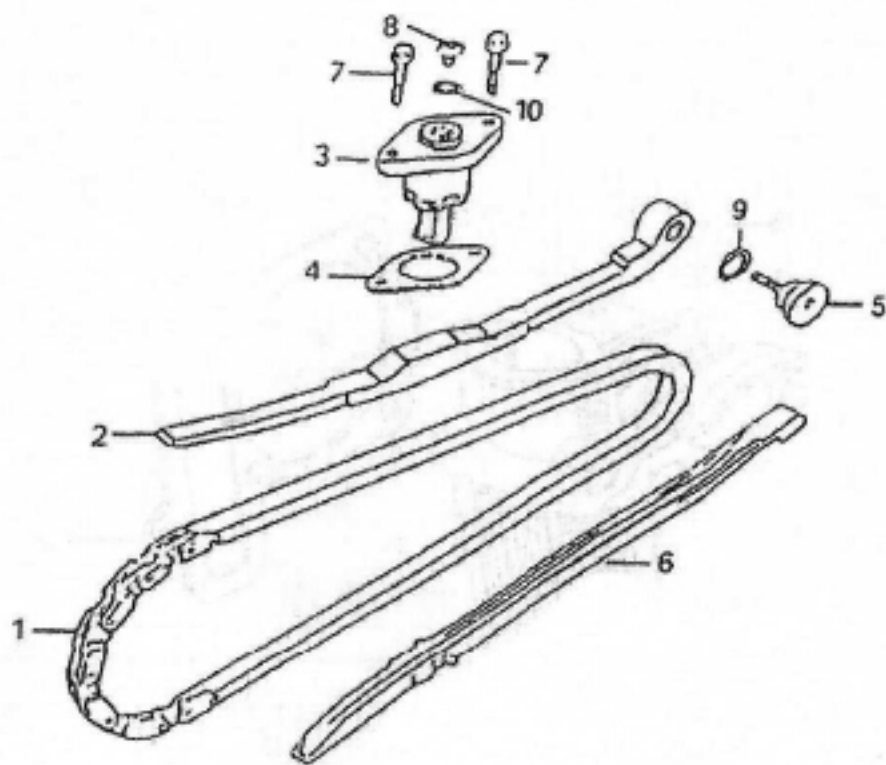
AA



凸轮轴、门阀 Camshaft、Valve

序号 No	件号 Part No	中文名称 Chinese	英文名称 Description	数量 Q'ty	备注 Remark
1		门阀油封 10V310-007	SEAL VALVE STEM	2	
2		凸轮轴 10U130-041	CAMSHAFT COMP	1	
3		止动板 102260-002	PLATE COMP STOPPER	1	
4		门阀摇臂 10U411-003	ARM VALVE ROCKER	2	
5		进气阀摇臂轴 10U413-008	SHAFT COMP IN ROCKER APM	1	
6		排气阀摇臂轴 10U413-009	SHAFT EX ROCKER	1	
7		进气阀 10V301-018	VALVE IN	1	
8		排气阀 10V302-018	VALVE EX	1	
9		门阀外弹簧 10V30V-009	SPRING VALVE OUTER	2	

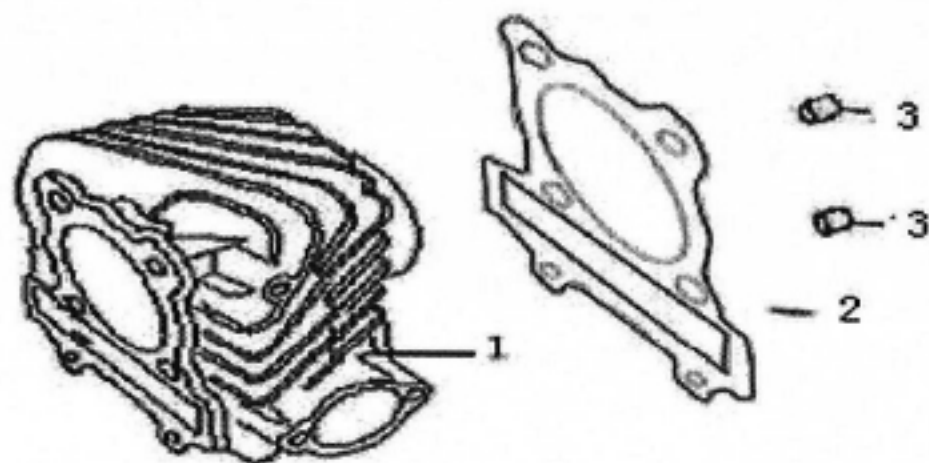
10	门阀内弹簧 10V303-009 ?	SPRING VALVE INNER	2	
11	门阀弹簧保持器 10V307-007	RETINER VALVE SPRING	2	
12	弹簧座 10V306-005	SEAT VALVE SPRING OUTER	2	
13	门阀锁扣 10V308-007	COTTER VELVE	4	
14	挺杆调整螺栓 10V415-003	SCREW TAPPET ADJUSTING	2	
15	调整螺栓固定螺母 10V416-003	NUT TAPPET ADJUSTING	2	

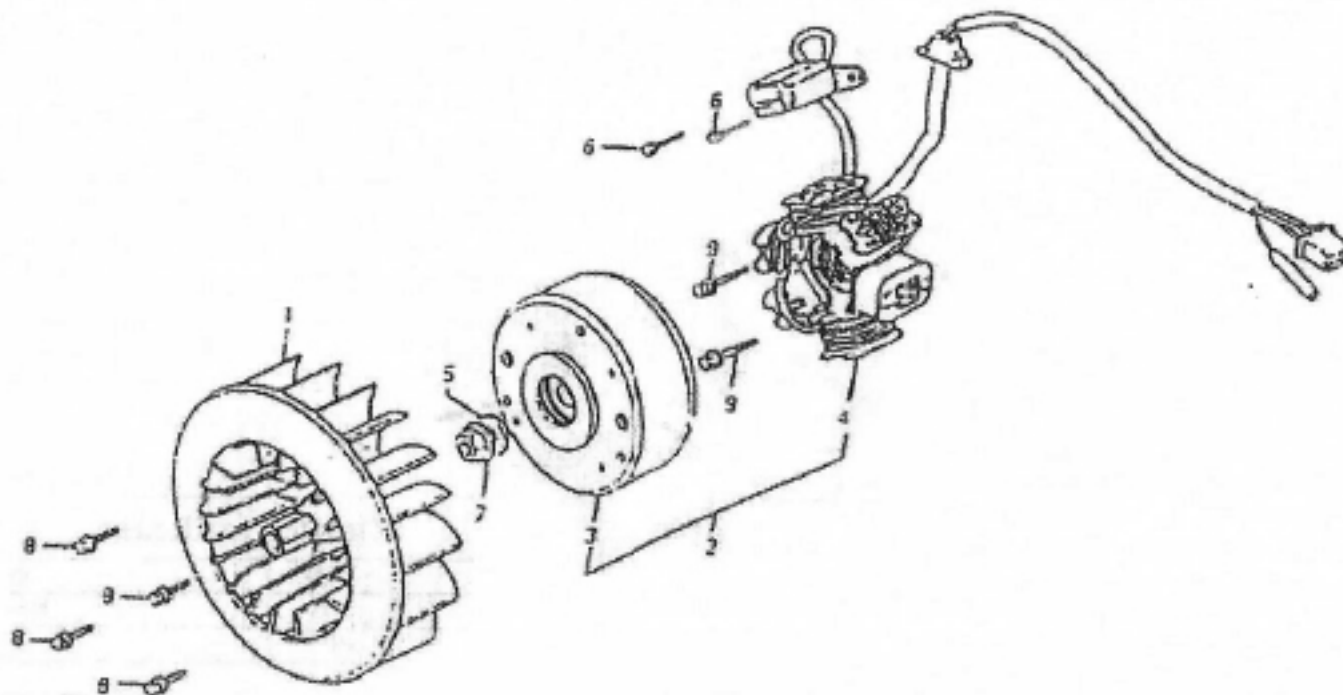


内链条、拉力杆 Cam Chain、Tensioner

序号	件号	中文名称	英文名称	数量	备注
----	----	------	------	----	----

No	Part No	Chinese	Description	Q'ty	Remark
1	GY6-180-000401	凸轮轴内链条	CHAIN CAM	1	
2	0104201-0009	链条拉力杆	TENSIONER CAM CHAIN	1	链条张紧板
3	0104200-0003	链条调整器	LIFTER ASSY TENSIOER	1	张紧器部件
4	0104209-0004	链条调整器垫片	GASKET TENSILNER LIFTER	1	张紧器密封垫
5	0104225-0001	拉力杆螺栓	PIVOT CAM CHAIN TENSIONER	1	
6	0104202-0009	链条导件	GUIDE COMP CAM CHAIN	1	
7	0906104-0114	螺栓 M6×22	BOLTED FLANGE M6×22	2	
8	0906176-0033	螺钉 M6×6	BOLTED FLANGE M6×6	1	
9	0104226-0001	O 型环 15.5×1.5	O-RING 15.5×1.5	1	
10	0104226-0002	O 型环 9.5×1.5	O-RING 9.5×1.5	1	



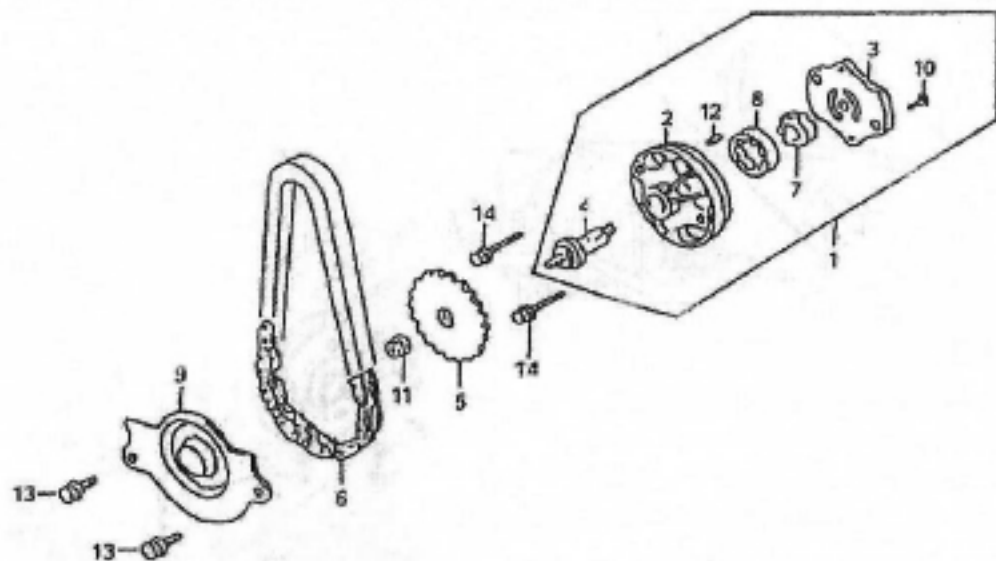


发电机 Generator

序号 No	件号 Part No	中文名称 Chinese	英文名称 Description	数量 Q'ty	备注 Remark
1	0111101-0001	冷却风扇	PANCOMP COOLING	1	
2	0111000-0037	交流发电机	GENERAATOR ASSY A.C.	1	
3	0111100-0025	飞轮	FLYWHEEL COMP	1	
4	0111200-0108	转子线圈	STATOK COMP	1	
5	0906150-0016	垫圈12	WASHER FLANGE 12	1	
6	0906175-0010	螺钉M5×12	BOLT M5×12	2	
7	0906161-0015	螺母 M12	VULT M12	1	

AG

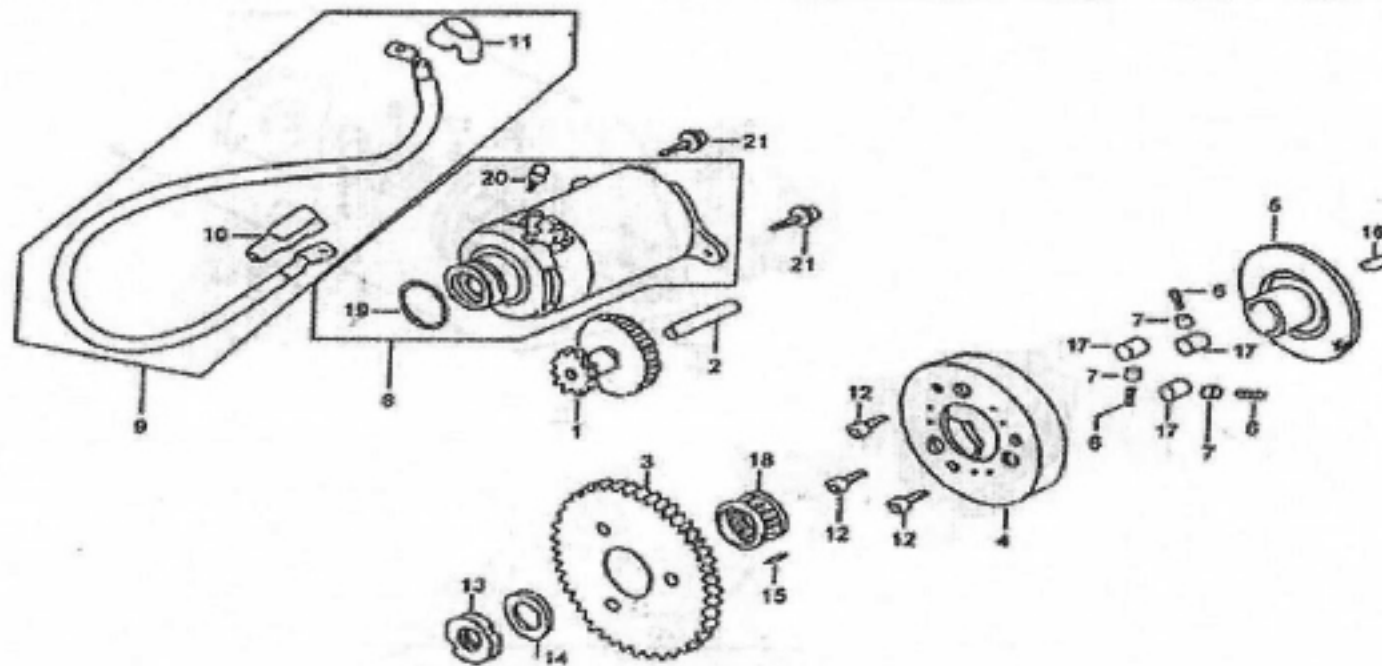
8	0906104-0121	螺栓 M6×18	BOLTED FLANGE M6×18	4	
9	0906104-0122	螺栓 M6×20	BOLTED FLANGE M6×20	2	



机油泵 Oil Pump

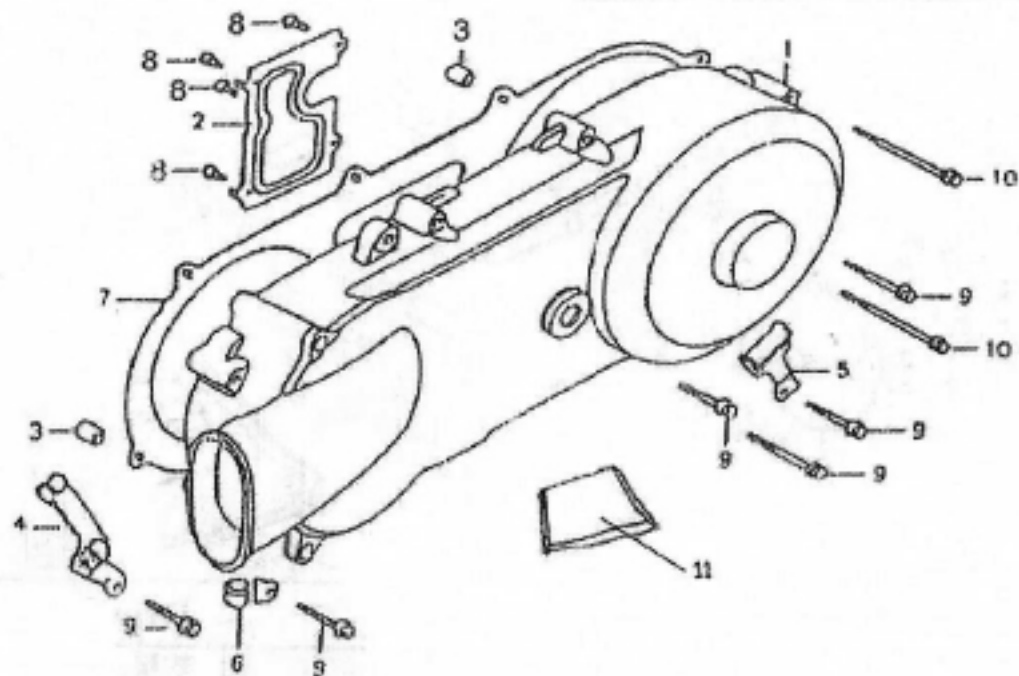
序号 No	件号 Part No	中文名称 Chinese	英文名称 Description	数量 Q'ty	备注 Remark
1		机油泵 105110-028 ?	PUMP ASSY OIL	1	
2		油泵本体 105111-001	BODY OIL PUMP	1	
3	0105117-0001	平板	PLATE OIL PUMP	1	机油泵盖板
4	0105102-0002	油泵轴	SHAFT OIL PUMP	1	油泵链轮轴
5	0105101-0005	机油泵驱动齿轮	SPROCKET OIL PUMP DRIVEN	1	油泵从动链轮
6	0105109-0001	机油泵驱动链条	CHAIN OIL PUMP	1	
7		油泵内转子 105112-001	ROTOR OIL PUMP INNER	1	
8	0105113-0001	油泵外转子	ROTOR OIL PUMP OUTER	1	
9	0105119-0001	机油分隔板	SEPARATOR OIL	1	油泵齿轮盖

10	0906175-0011	螺钉 M3×10	SCREW PAN M3×10	1	
11	0906161-0016	螺母 M6	NUT M6	1	
12	0906184-0003	定位销 4×6.5	PIN DOWEL 4×6.5	1	
13	0906104-0115	螺栓 M6×12	BOLTED FLANGE M6×12	2	
14	0906104-0112	螺栓 M6×25	BOLTED FLANGE M6×25	2	



起动机 Starting Motor

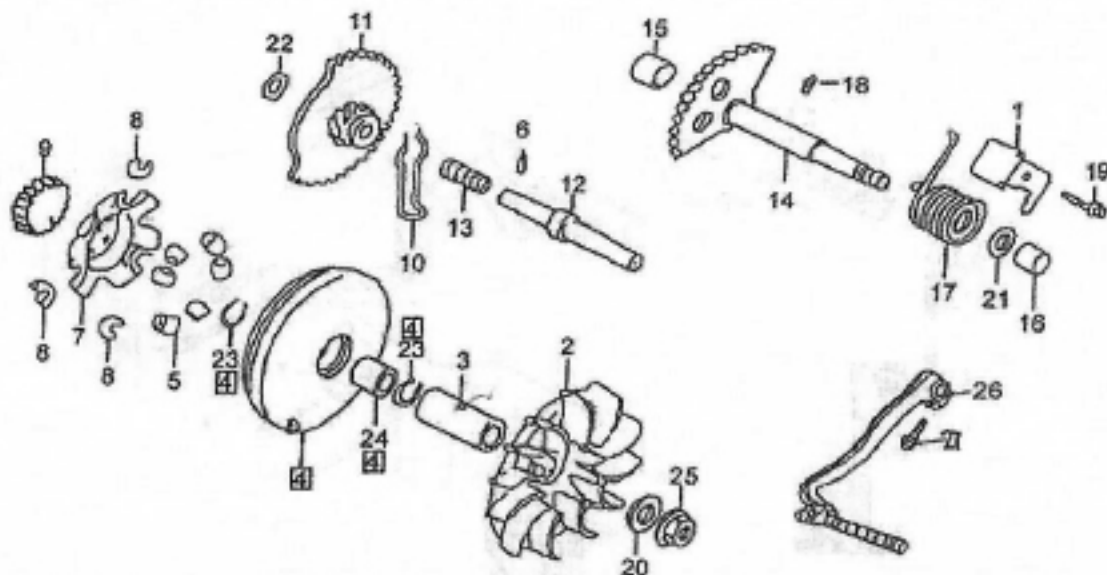
序号 No	件号 Part No	中文名称 Chinese	英文名称 Description	数量 Q'ty	备注 Remark
1	0109231-0002	起动机减速齿轮	GEAR STAER EDUCTION	1	大双联齿轮
2	0109221-0002	起动机减速齿轮轴	SHAFT STARTER REDUCTION GEAR	1	大双联齿轮轴
3	0109211-0003	起动机离合器齿轮	GEAR COMP STARTING CLUTCH	1	
4	0109112-0001	离合器外套	OUTER COMP STARTING	1	



左曲轴箱盖 Left Crankcase Cover

序号 No	件号 Part No	中文名称 Chinese	英文名称 Description	数量 Q'ty	备注 Remark
1	0101301-0219	左曲轴箱盖	LEFT CRANKCASE COVER	1	
2	0101322-0001	通气导板	PLATE COVER	1	
3	0906184-0002	定位销 8×14	PIN DOWEL 8×14	2	
4	0101323-0001	节流导线夹	CLAMPER THROTTLE CABLE	1	
5	0101324-0001	刹车导线夹	CLAMPER BRAKE TUBE	1	
6	0101114-0005	溢油管夹	CLAMPER BREATHER DRAIN TUBE	1	
7	0101304-0013	左曲轴箱盖垫片	LEFT CRANKCASE COVER WASHER	1	
8	0906176-0029	螺钉 ST4×8	SCREW PAN ST4×8	4	

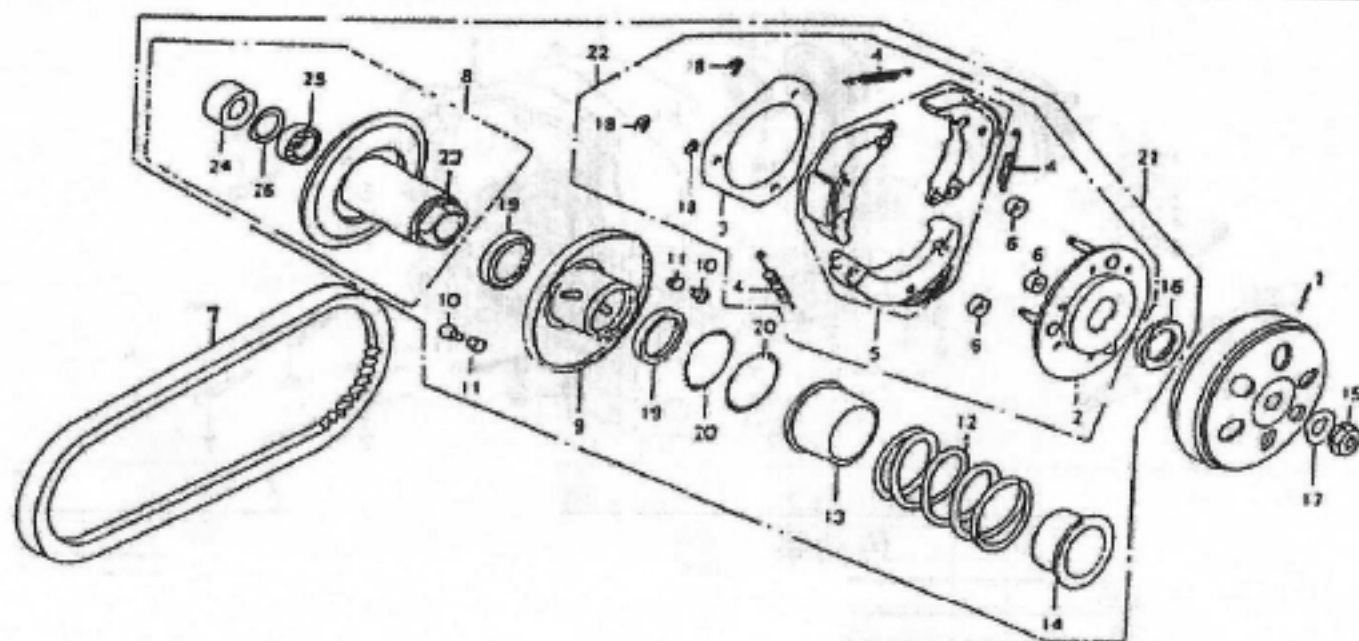
9	0906104-0120	螺栓 M6×40	BOLTED FLANGE M6×40	6	
10	0906104-0126	螺栓 M6×65	BOLTED FLANGE M6×65	2	
11	0101325-0001	主脚架固定板	REAR BRAKE TRED	1	



驱动皮带轮 Drive Pulley

序号 No	件号 Part No	中文名称 Chinese	英文名称 Description	数量 Q'ty	备注 Remark
1	0109315-0001	起动杆回位制动板	PLAE KIKKRE TURNSTOPPER	1	
2	0109316-0001	驱动板带叶盘	FACE DRIVE	1	
3	0109317-0001	衬套	BOSS DRIVE FACE	1	
4	0109318-0001	滑动式驱动盘	FACE COMP MOVABLE DRIVE	1	
5	0109319-0001	配动滚子	ROLLER SETWEIGHT	6	
6	0109323-0001	滚针 3×8.5	ROLLER 3×8.5	1	
7	0109324-0001	斜坡板	PLATE RAMP	1	
8	0109325-0001	斜坡板边件	PLECE SLIDE	3	

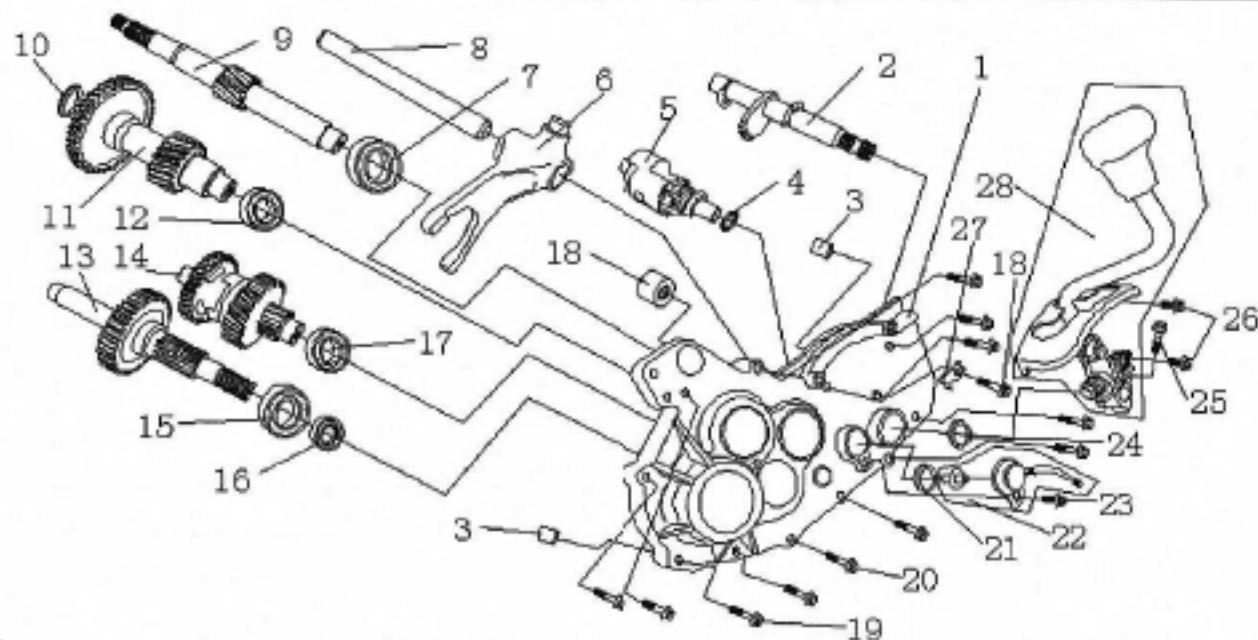
20	906150-0016	垫圈 12	WASHER 12	1	
21	0906150-0020	垫圈 14	WASHER 14	1	
22	0906150-0019	垫圈 12.5	WASHER 12.5	1	
23	0109332-0001	环夹 28mm	CIR CLIP 28mm	2	
24	0109329-0003	套筒 28	COLLAR DRIVE FACE	1	
25	0906161-0015	螺母 M12	NUT M12	1	
26	0109400-0027	脚蹬杆	ARM ASSY KICK STARTER	1	
27	0906104-0114	螺栓 M6×22	BOLTED FLANGE M6×22	1	



传动皮带轮 Driven Pulley

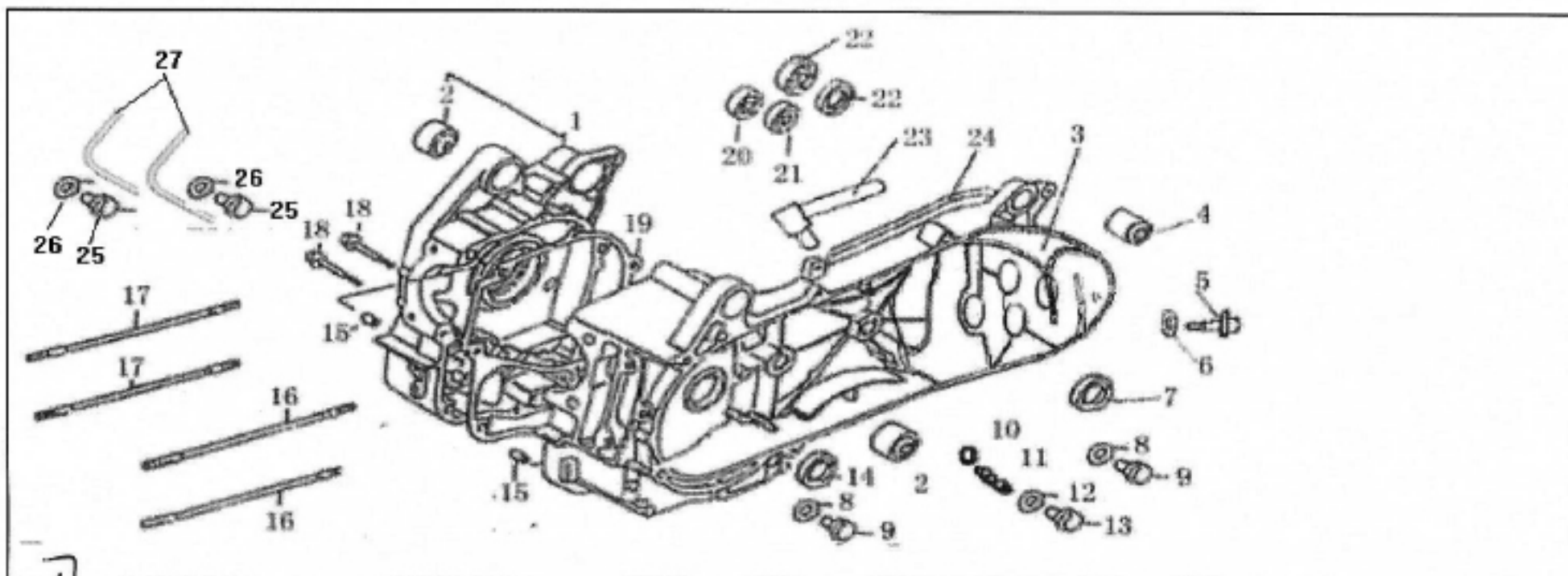
序号	件号	中文名称	英文名称	数量	备注
No	Part No	Chinese	Description	Q'ty	Remark
1	0106262-0003	离合器外套	OUTER CLUTCH	1	

24	0212211-0004	滚针轴承	BEARING MEEDLE	1	
25	0902012-0014	轴承 6902U	BEARING BALL REDLAL6906U	1	
26	0106043-0001	内环夹 28mm	CIR CLIP IN 28mm	1	



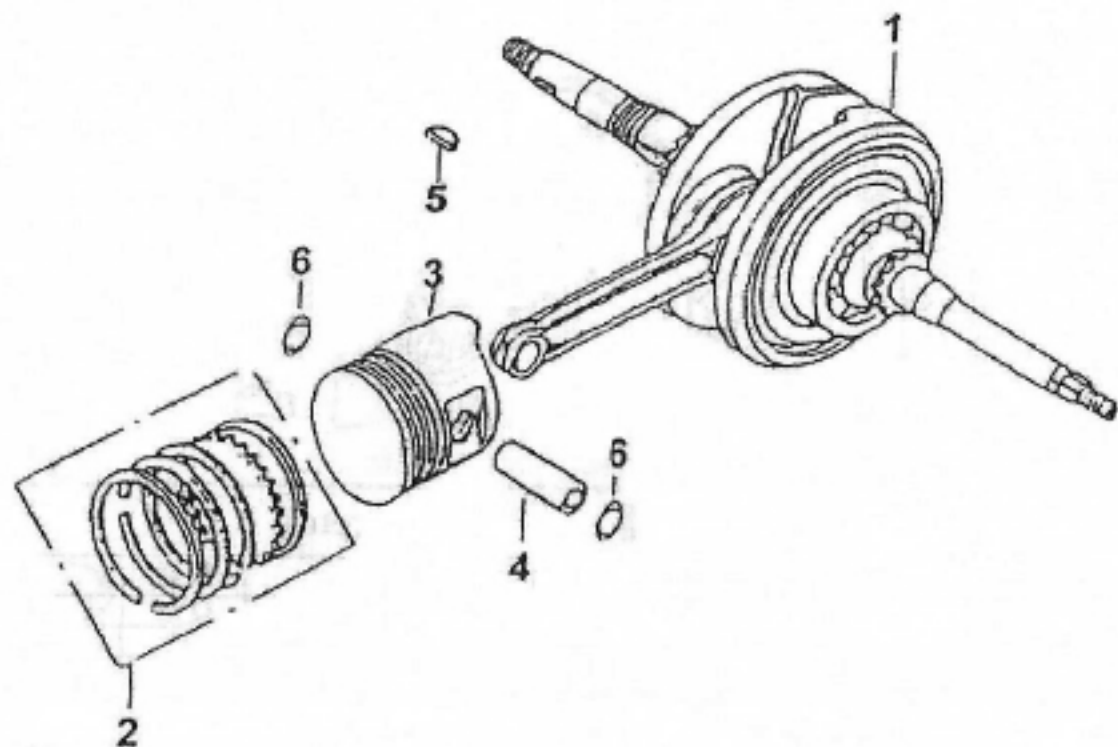
传动系 Transmission

序号 No	件号 Part No	中文名称 Chinese	英文名称 Description	数量 Q'ty	备注 Remark
1	0107308-0001	齿轮室盖	COVER MISSION ASSY	1	
2	0108200-0019	变档轴组件	CHANGE WAY AXES ASSY	1	
3	0906184-0002	定位销 8×14	PIN DOWEL 8×14	2	
4	0906150-0021	垫片 14×24×1	WASHER DRAIN PLUG 14×24×1	1	
5	0108110-0036	变档鼓组件	CHANGE WAY DRUM ASSY	1	
6	0108121-0003	拨叉	CHANGE WAY FORK	1	



曲轴箱 Crankcase

序号 No	件号 Part No	中文名称 Chinese	英文名称 Description	数量 Q'ty	备注 Remark
1		右曲轴箱组件 101270-005?	CRANKCASE ASSY R	1	
2	0101223-0001	引擎吊架橡胶衬套	BUSH ENGINE HANGER RUBBER	2	
3		左曲轴箱组件 10140-263	CRANKCASE ASSY L	1	
4	0101225-0001	后缓冲器下端衬套	BUSH RR CUSHION UNDER BUBBER	1	
5	0107235-0001	特殊螺栓	BOLT SPECIAL	1	
6	0906150-0050	垫圈 8	WASHER 8	1	
7	0107230-0011	油封 20×32×6	OIL SEAL 20×32×6	1	
8	0906150-0016	垫圈 12	WASHER DRAIN PLUG 12	2	



1
Cra

曲轴、活塞 Crankshaft, Piston

序号 No	件号 Part No	中文名称 Chinese	英文名称 Description	数量 Q'ty	备注 Remark
1	0103200-0069	曲轴	CRANKSHAFT COMP	1	
2		活塞环组件 103170-029	RING SET PISTON (STD)	1	
3		活塞 103101-036	PISTON (STD)	1	
4		活塞销 103102-015	PIN PISTON	1	
5	0103203-0006	固定键 25×14×4	KEY WOODRUFF 25×14×4	1	
6	0103103-0011	活塞销夹	CLIP PISTON PIN	2	